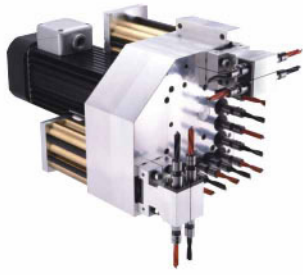


www.routmac.com



CNC Boring Heads & Aggregate Heads Series



CNC-WF3213 L-4H



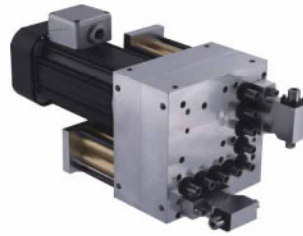
CNC-WF3213 L-2S-2H



CNC-WF3221



CNC-WF3211 L-2S



CNC-WF3211 L-2H



CNC-WF3205



CNC-WF3209L



WHC3001



WFC3001



WHC3002



WFC3002



WFC3003



WFC3018



WHC3006L



WHC3007L



WHC3008L



WHC3009L



WHV3203

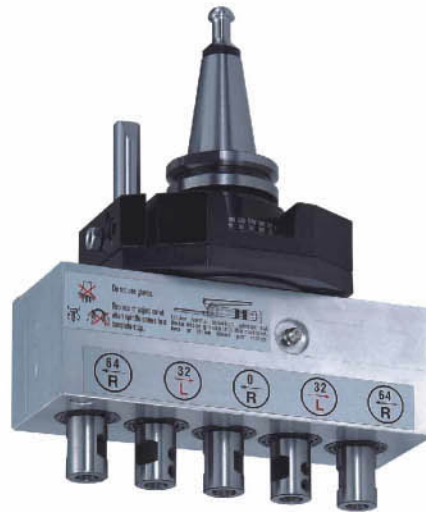


WIV3203

HSK63F and ISO30 Arbors



HSK63F	ISO30
WHD387.5	WID387.5
WHD4211	WID4211
WHD459.5	WID459.5
WHD48-2.5	WID48-2.5
WHD486	WID486
WHD48-7.5	WID48-7.5
WHD489	WID489
WHD525.5	WID525.5
WHD526	WID526



HSK63F	ISO30
WHD2003	WID2003
WHD2203	WID2203
WHD2503	WID2503
WHD3003	WID3003
WHD3203	WID3203
WHD2005	WID2005
WHD2205	WID2205
WHD2505	WID2505
WHD3005	WID3005
WHD3205	WID3205



H707+WD213



WFV3202



WHD2005

CNC adjustable aggregate heads series



WFC3019



WHC3019

Adjustable boring heads



WD211



WD314

HSK63F and ISO30 Arbors



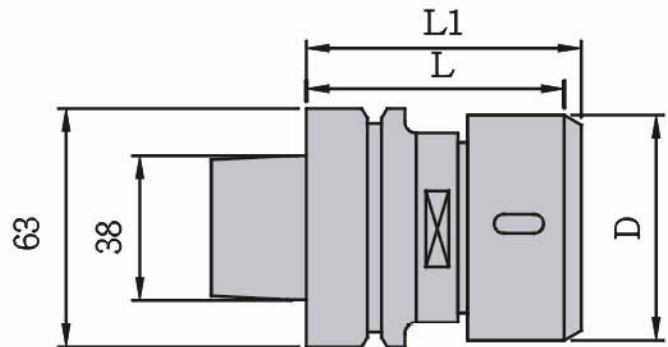
WOZ6325



WER6332



WER6340



HSK 63F TOOLHOLDERS CNC ROUTERS DIN69893

Part No	Description	Collet type	L	L1	D	WEIGHT KGS
WER6332	Collet Chucks with nut	ER32	60	70	50	
WER6340	Collet Chucks with nut	ER40	60	70	63	
WOZ6325	Collet Chucks with nut	OZ25	62	72	60	



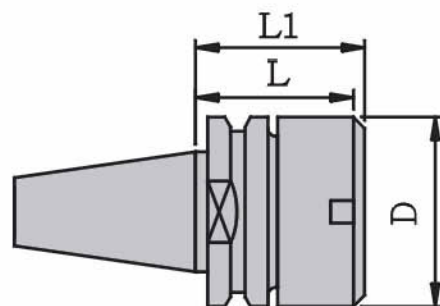
WOZ3025



WER3032-38L



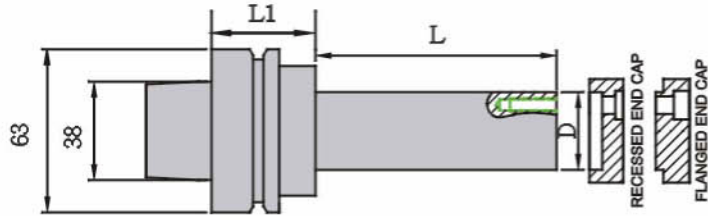
WER3032



ISO30 COLLET HOLDERS FOR CNC ROUTERS DIN69871

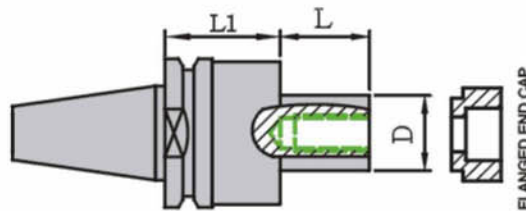
Part No	Description	Collet type	L	L1	D	WEIGHT KGS
WER3032	Collet Chucks with nut	ER32	33	43	50	
WER3032-38L	Collet Chucks with nut	ER32	54	64	50	
WER3040	Collet Chucks with nut	ER40	39	49	63	
WOZ3025	Collet Chucks with nut	OZ25	49	59	60	

HSK63F and ISO30 Arbors



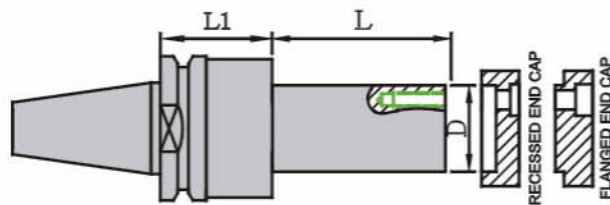
HSK 63F TOOLHOLDERS CNC ROUTERS DIN69893

Part No	Description	L	L1	D	WEIGHT KGS
WOD6330-55	Mill hold arbor	55	40	30	
WOD6330-80	Mill hold arbor	80	40	30	
WOD6330-93	Mill hold arbor	93	40	30	
WOD6335-55	Mill hold arbor	55	40	35	
WOD6335-80	Mill hold arbor	80	40	35	
WOD6335-93	Mill hold arbor	93	40	35	
WOD6340-55	Mill hold arbor	55	40	40	
WOD6340-80	Mill hold arbor	80	40	40	
WOD6340-93	Mill hold arbor	93	40	40	
WOD633175-55	Mill hold arbor	55	40	1 1/4"	
WOD633175-80	Mill hold arbor	80	40	1 1/4"	
WOD633175-93	Mill hold arbor	93	40	1 1/4"	



ISO30 HOLDERS FOR ROUTERS DIN69871

Part No	Description	L	L1	D	WEIGHT KGS
WOD30130	Mill hold arbor	30	39	1"	
WOD30155	Mill hold arbor	55	39	1"	



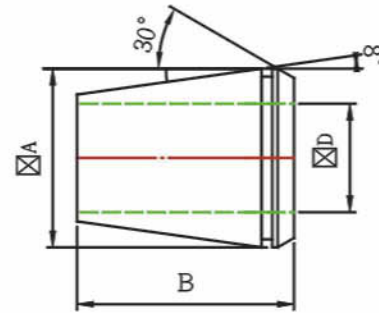
ISO30 HOLDERS FOR ROUTERS DIN69871

Part No	Description	L	L1	D	WEIGHT KGS
WOD303055	Mill hold arbor	55	39	30	
WOD303175	Mill hold arbor	55	39	1-1/4"	

ER COLLET



Dimension		
TYPE	A	B
ER11	11.5	18
ER16	17	27
ER20	21	31



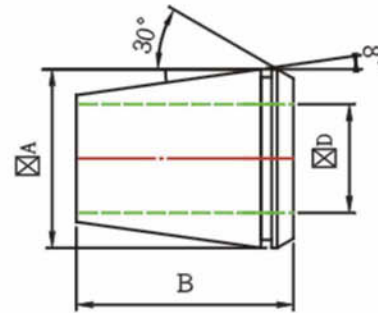
ER SPRING COLLET SYSTEM DIN6499

ER11	RANGE mm	ER16	RANGE mm	ER20	RANGE mm
WER11025	2.5-2.0	WER16030	3.0-2.0	WER20030	3.0-2.0
WER11030	3.0-2.5	WER16040	4.0-3.0	WER20040	4.0-3.0
WER11035	3.5-3.0	WER16050	5.0-4.0	WER20050	5.0-4.0
WER11040	4.0-3.5	WER16060	6.0-5.0	WER20060	6.0-5.0
WER11045	4.5-4.0	WER16070	7.0-6.0	WER20070	7.0-6.0
WER11050	5.0-4.5	WER16080	8.0-7.0	WER20080	8.0-7.0
WER11055	5.5-5.0	WER16090	9.0-8.0	WER20090	9.0-8.0
WER11060	6.0-5.5	WER16100	10-9.0	WER20100	10-9.0
WER11065	6.5-6.0	0.5MM	SIZE	WER20110	11-10
		WER16025	2.5	WER20120	12-11
		WER16035	3.5	WER20130	13-12
		WER16045	4.5	0.5MM	SIZE
		WER16055	5.5	WER20025	2.5
		WER16065	6.5	WER20035	3.5
		WER16075	7.5	WER20045	4.5
		WER16085	8.5	WER20055	5.5
		WER16095	9.5	WER20065	6.5
				WER20075	7.5
				WER20085	8.5
				WER20095	9.5
				WER20105	10.5
				WER20115	11.5
				WER20125	12.5
				WER20135	13.5

ER COLLET



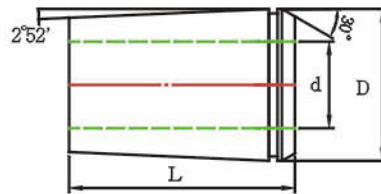
Dimension	A	B
TYPE	A	B
ER25	26	35
ER32	33	40
ER40	41	46



ER SPRING COLLET SYSTEM DIN6499

ER25	RANGE mm	ER32	RANGE mm	ER40	RANGE mm
WER25030	3.0-2.0	WER32030	3.0-2.0	WER40040	4.0-3.0
WER25040	4.0-3.0	WER32040	4.0-3.0	WER40050	5.0-4.0
WER25050	5.0-4.0	WER32050	5.0-4.0	WER40060	6.0-5.0
WER25060	6.0-5.0	WER32060	6.0-5.0	WER40070	7.0-6.0
WER25070	7.0-6.0	WER32070	7.0-6.0	WER40080	8.0-7.0
WER25080	8.0-7.0	WER32080	8.0-7.0	WER40090	9.0-8.0
WER25090	9.0-8.0	WER32090	9.0-8.0	WER40100	10-9.0
WER25100	10-9.0	WER32100	10-9.0	WER40110	11-10
WER25110	11-10	WER32110	11-10	WER40120	12-11
WER25120	12-11	WER32120	12-11	WER40130	13-12
WER25130	13-12	WER32130	13-12	WER40140	14-13
WER25140	14-13	WER32140	14-13	WER40150	15-14
WER25150	15-14	WER32150	15-14	WER40160	16-15
WER25160	16-15	WER32160	16-15	WER40170	17-16
		WER32170	17-16	WER40180	18-17
		WER32180	18-17	WER40190	19-18
		WER32190	19-18	WER40200	20-19
		WER32200	20-19	WER40210	21-20
				WER40220	22-21
				WER40230	23-22
				WER40240	24-23
				WER40250	25-24
				WER40260	26-25

OZ COLLET



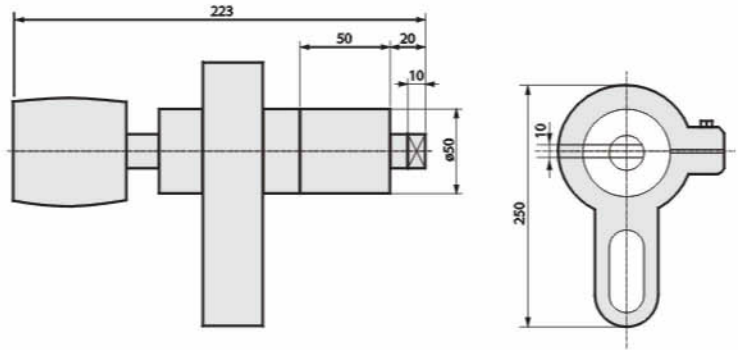
DIN6388-25# Range size:3-25(1/8"-1") D:35.05 L:52 Taper:1:10 Weight:0.18

OZ25 COLLET AS TO DIN6388

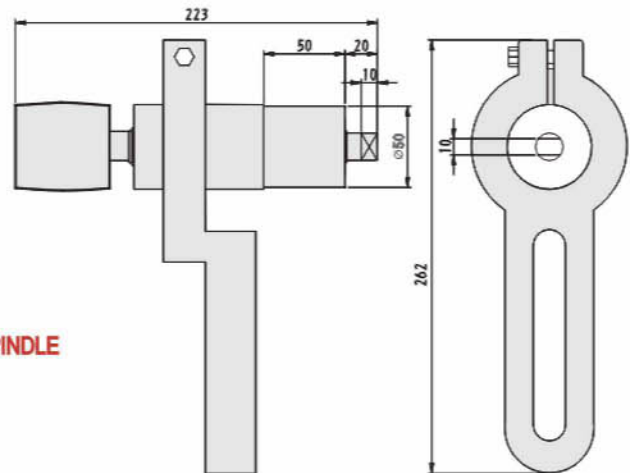
No	MM SIZE	No	INCH SIZE
WOZ2503	3.0	WOZ2526	1/8"
WOZ2504	4.0	WOZ2527	3/16"
WOZ2505	5.0	WOZ2528	1/4"
WOZ2506	6.0	WOZ2529	5/16"
WOZ2507	7.0	WOZ2530	3/8"
WOZ2508	8.0	WOZ2531	7/16"
WOZ2509	9.0	WOZ2532	1/2"
WOZ2510	10	WOZ2533	9/16"
WOZ2511	11	WOZ2534	5/8"
WOZ2512	12	WOZ2535	11/16"
WOZ2513	13	WOZ2536	3/4"
WOZ2514	14	WOZ2537	13/16"
WOZ2515	15	WOZ2538	7/8"
WOZ2516	16	WOZ2539	15/16"
WOZ2517	17	WOZ2540	1"
WOZ2518	18		
WOZ2519	19		
WOZ2520	20		
WOZ2521	21		
WOZ2522	22		
WOZ2523	23		
WOZ2524	24		
WOZ2525	25		

MULTIPLE-AXIS

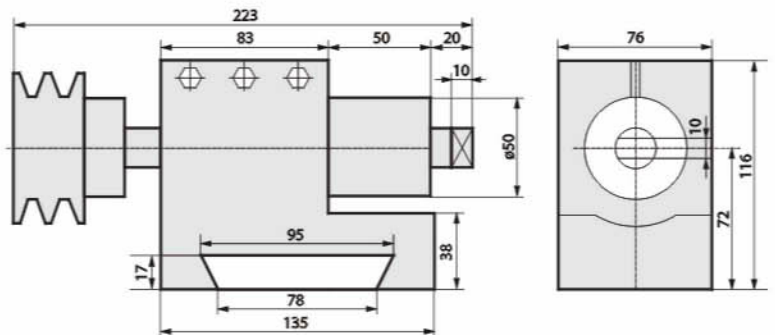
VERTICAL SPINDLE & HORIZONTAL SPINDLE



WT 001
VERTICAL SPINDLE

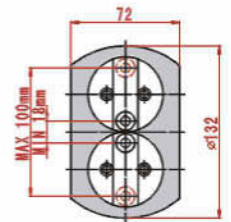
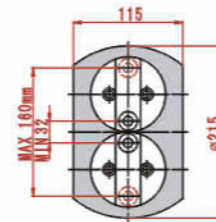
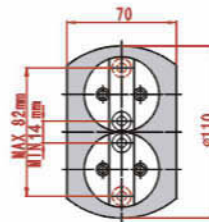
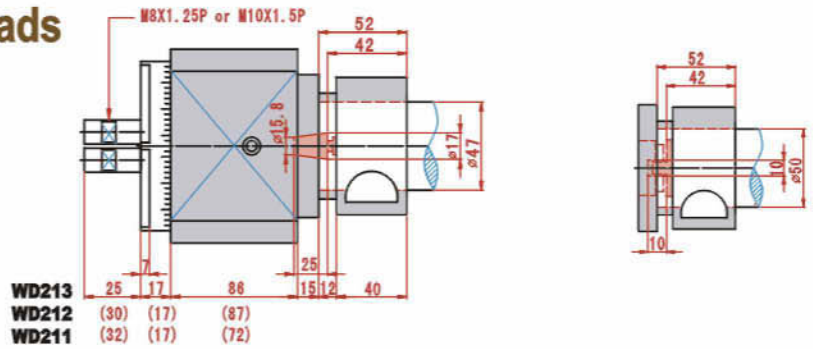


WT 001-B
VERTICAL SPINDLE

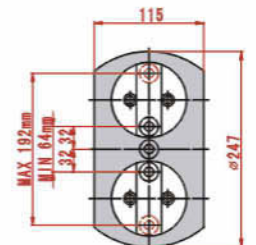
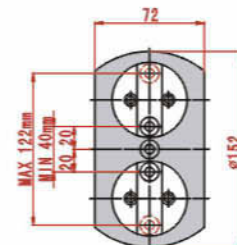
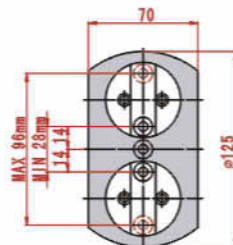
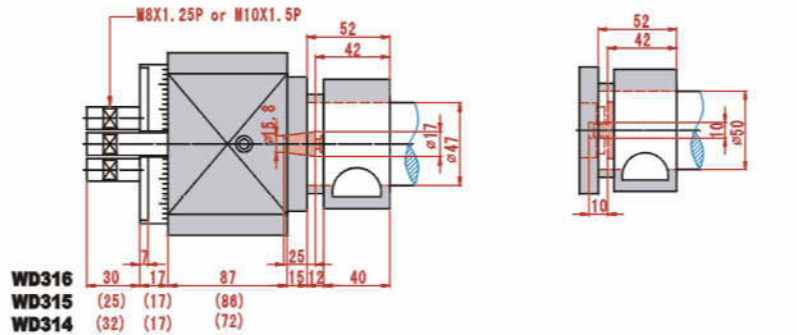


WV 101
HORIZONTAL SPINDLE

Drill Bits & Gear Heads



MODEL	SPACING			Thread	WEIGHT Kg
	Min	Max	Max capacity		
WD211	14	82	∅10	M8X1.25P	2.5
WD212	32	160	∅15	M8X1.25P or M10X1.5P	8
WD213	18	100	∅15	M8X1.25P or M10X1.5P	3.7

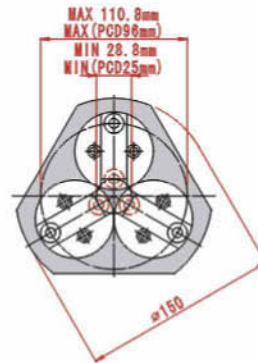
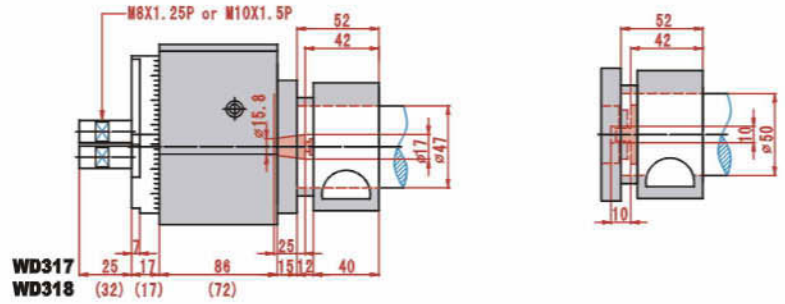


MODEL	SPACING			Thread	WEIGHT Kg
	Min	Max	Max capacity		
WD314	14	96	∅10	M8X1.25P	3
WD315	20	122	∅15	M8X1.25P or M10X1.5P	4.3
WD316	32	192	∅15	M8X1.25P or M10X1.5P	9

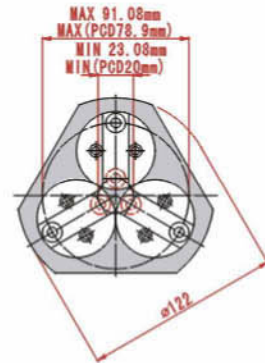
MULTIPLE-AXIS

ADJUSTABLE

Drill Bits & Gear Heads

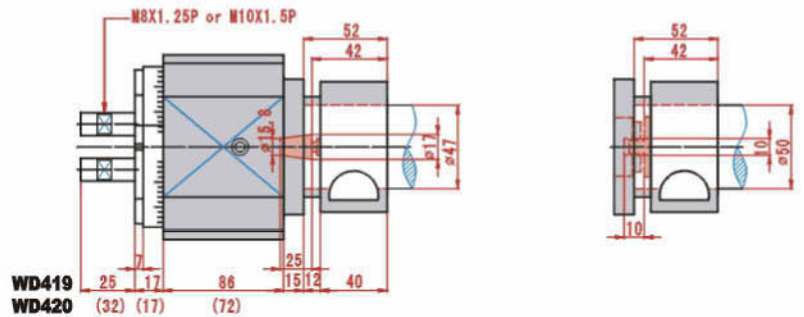


WD317



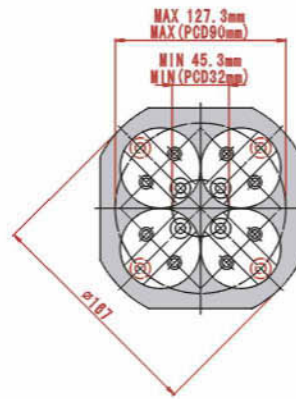
WD318

MODEL	SPACING			Thread	WEIGHT Kg
	Min	Max	Max capacity		
WD317	25	96	$\phi 15$	M8X1.25P or M10X1.5P	5.1
WD318	20	78.9	$\phi 10$	M8X1.25P	3.5

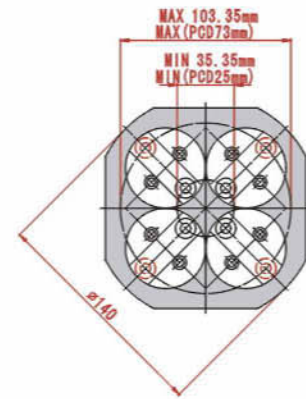


WD419

WD420



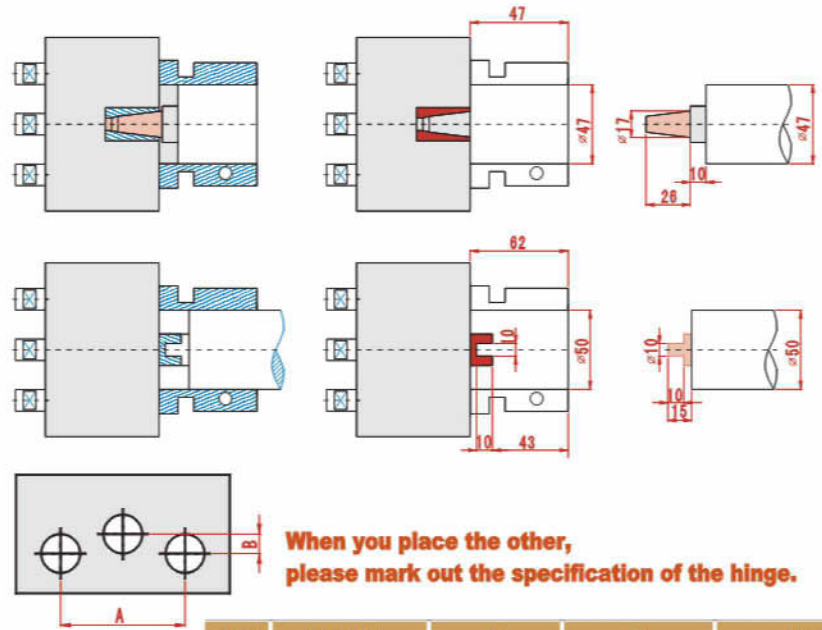
WD419



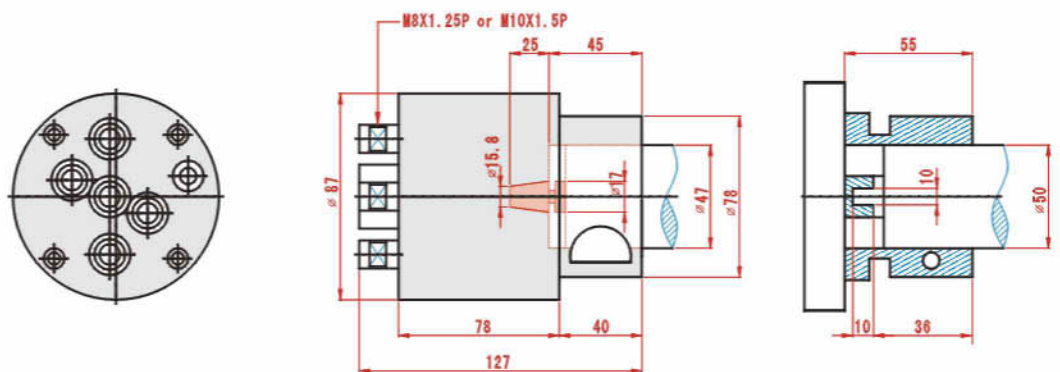
WD420

MODEL	SPACING			Thread	WEIGHT Kg
	Min	Max	Max capacity		
WD419	32	90	$\phi 15$	M8X1.25P or M10X1.5P	7
WD420	25	73	$\phi 10$	M8X1.25P	4.2

Drill Bits & Gear Heads

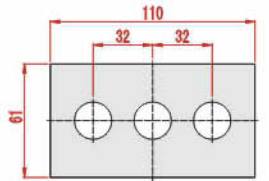


NO	MODEL	A	B	Kg
1	WA387.5	38	7.5	1.7
2	WA4211	42	11	1.7
3	WA459.5	45	9.5	1.7
4	WA48-2.5	48	-2.5	1.7
5	WA486	48	6	1.7
6	WA48-7.5	48	-7.5	1.7
7	WA489	48	9	1.7
8	WA525.5	52	5.5	1.7
9	WA526	52	6	1.7

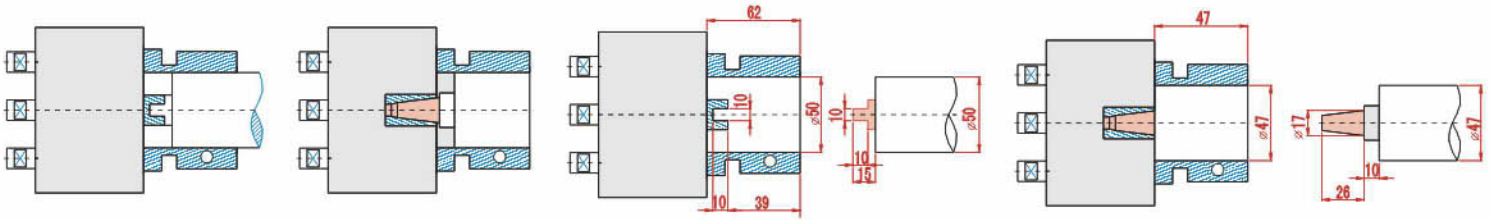


MODEL	SPACING	Max capacity	Thread	WEIGHT
	PH			Kg
WB506	16X20X25X32X40	∅12	M8X1.25P	1.6
WB507	16x20x22x25x29x32	∅12	M8X1.25P	1.6
WB508	17X22X32X34X44	∅12	M8X1.25P	1.8
WB509	20X24X28X34X40X48	∅15	M8X1.25P or M10X1.5P	1.8
WB510	1"X1¼"X1½"X2"X2½"	∅15	M8X1.25P or M10X1.5P	2.3
WB511	22X32X44X64	∅15	M8X1.25P or M10X1.5P	2.3
WB512	20X30X40X60	∅15	M8X1.25P or M10X1.5P	2.3

Drill Bits & Gear Heads



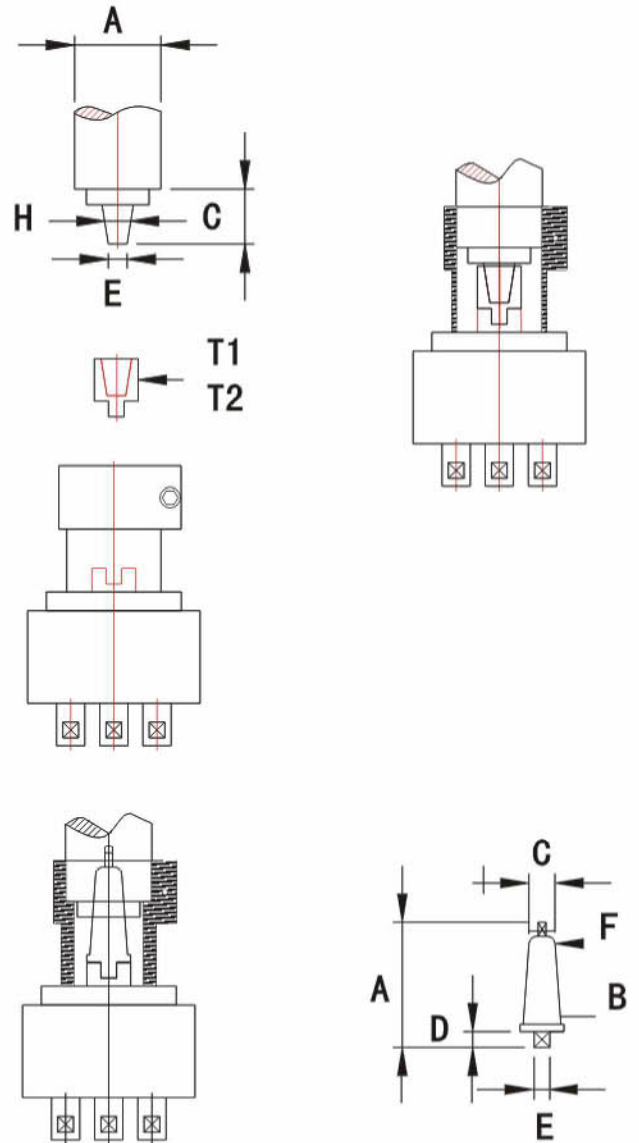
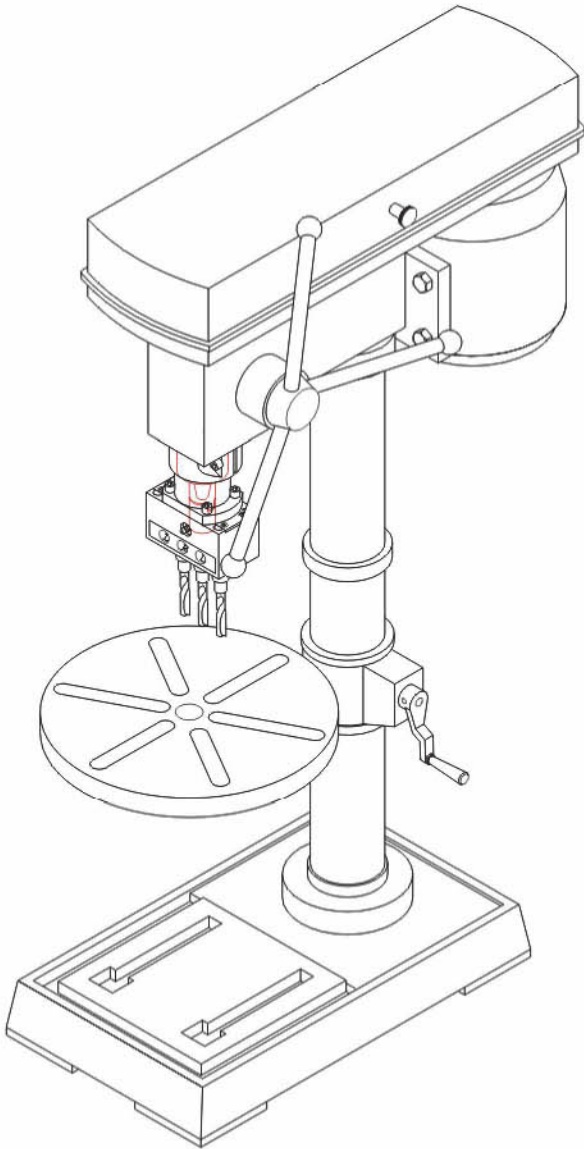
WF3203



MODEL	SPACING			Thread	WEIGHT Kg
	PH	Max capacity			
WF2003	20mm X3	∅15		M8X1.25P or M10X1.5P	1.8
WF2203	22mm X3	∅15		M8X1.25P or M10X1.5P	1.8
WF2503	25mm X3	∅15		M8X1.25P or M10X1.5P	1.8
WF3003	30mm X3	∅20		M8X1.25P or M10X1.5P	2
WF3803	38mm X3	∅20		M8X1.25P or M10X1.5P	2.5
WF2005	20mm X5	∅15		M8X1.25P or M10X1.5P	2.5
WF2205	22mm X5	∅15		M8X1.25P or M10X1.5P	2.5
WF2505	25mm X5	∅15		M8X1.25P or M10X1.5P	2.5
WF3005	30mm X5	∅20		M8X1.25P or M10X1.5P	2.8
WF3805	38mm X5	∅20		M8X1.25P or M10X1.5P	3.5
WF3203	32mm X3	∅20		M8X1.25P or M10X1.5P	2
WF3205	32mm X5	∅20		M8X1.25P or M10X1.5P	2.8
WF3207	32mm X7	∅15		M8X1.25P or M10X1.5P	4
WF3209	32mm X9	∅15		M8X1.25P or M10X1.5P	5
WF3211	32mm X11	∅15		M8X1.25P or M10X1.5P	6
WF3213	32mm X13	∅15		M8X1.25P or M10X1.5P	6.5
WF3215	32mm X15	∅15		M8X1.25P or M10X1.5P	7.5
WF3217	32mm X17	∅15		M8X1.25P or M10X1.5P	8.2
WF3221	32mm X21	∅15		M8X1.25P or M10X1.5P	10
WF3227	32mm X27	∅15		M8X1.25P or M10X1.5P	13.3
WF3235	32mm X35	∅15		M8X1.25P or M10X1.5P	17

MULTIPLE-AXIS

Drill Machines & Gear Heads



Jacobs taper

Unit:mm

JT 錐度規格	C	E	H
JT2	22.225	12.386	14.199
JT3	30.958	18.951	20.599
JT6	26.2	15.852	17.17

DIN taper

Unit:mm

DIN 錐度規格	C	E	H
B12	18.5	11.1	12.065
B16	24	14.5	15.733
B18	32	16.2	17.78

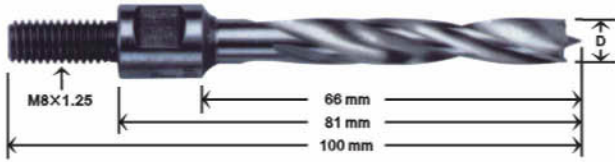
Morse taper

Unit:mm

MT 錐度規格	A	B	C	D	E
MT1	65.5	12.065	9	10	10
MT2	80	17.78	14	10	10
MT3	99	23.825	19.1	10	10

Special Woodworking Drill Bit Series

A210 外牙特殊鑽頭 THREADED SHANK SOLID DRILLS



High Speed Steel Spiral Flute L. H. or R. H. Cut

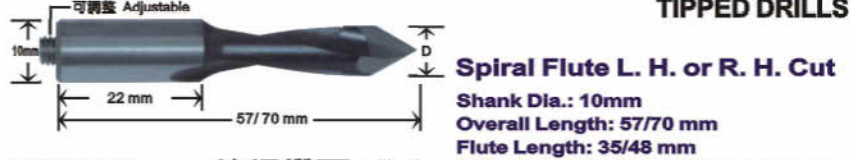
TCT510-1 鎢鋼鑽頭 TUNGSTEN CARBIDE Spiral Flute L. H. or R. H. Cut STEEL TIPPED DRILLS Shank Dia.: 10mm Overall Length: 57mm/70mm Drill Dia.: 15/20/25/30/35mm (SPECIAL TCT) (特別材質)



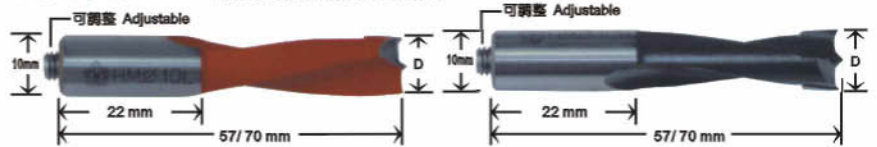
RS210 組合式外牙特殊鑽頭 (新式經濟型) THREADED SHANK SOLID DRILLS WITH INTEGRAL ADAPTER (NEWLY ECONOMIC TYPE)



TCT510-V 鎢鋼鑽頭 (貫穿式) TUNGSTEN CARBIDE STEEL THRU-HOLE TIPPED DRILLS



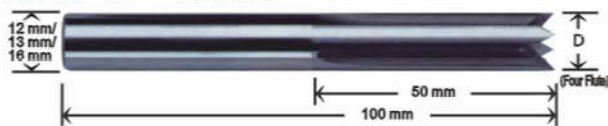
TCT510 鎢鋼鑽頭 (榫孔) DOWEL TIPPED DRILLS



K112-2T 榫槽刀 STRAIGHT SHANK SOLID MORTISING TOOL



K112-4T 榫槽刀

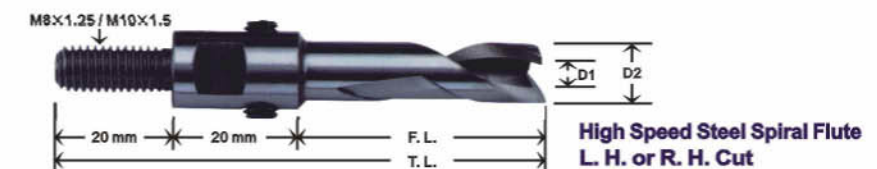


High Speed Steel Straight Flute Two Flute / Four Flute

H211-L 組合沙拉刀套 H211-V INTEGRAL SALAD ADAPTOR



AH211-L 組合外牙沙拉刀套 AH211-V THREADED INTEGRAL SALAD ADAPTOR



S211-4T 直柄鑽頭 STRAIGHT SHANK SOLID DRILLS



High Speed Steel Four Spiral Flute

A210-L 外牙特殊雙層鑽頭 A210-V THREADED SHANK SOLID STEP DRILLS

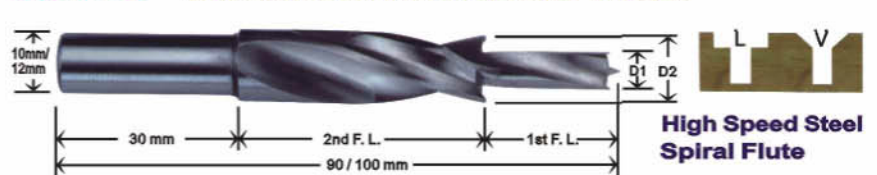


S211-2T 直柄鑽頭 STRAIGHT SHANK SOLID DRILLS

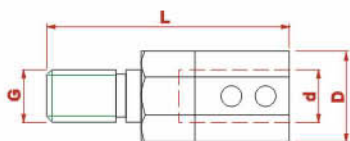


High Speed Steel Two Spiral Flute

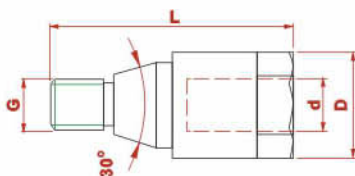
S211-BL 直柄雙層鑽頭 S211-BV STRAIGHT SHANK SOLID STEP DRILLS



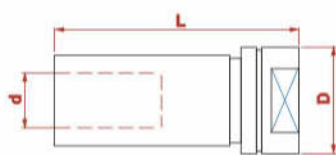
Adaptors & Quick Change Chuck



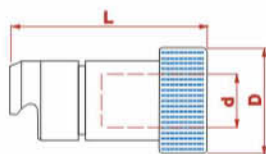
MODEL	L	d	D	G
FM0810R	43	10	16.8	M8
FM0810L	43	10	16.8	M8
FM1010R	43	10	16.8	M10
FM1010L	43	10	16.8	M10



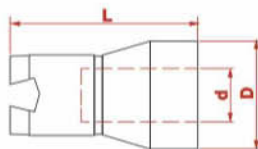
MODEL	L	d	D	G
FMV1010R	47	10	20	M10
FMV1010L	47	10	20	M10



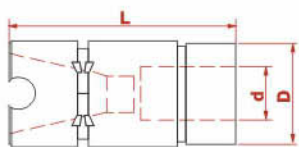
MODEL	L	d	D
FQC2010	46	10	20



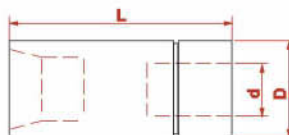
MODEL	L	d	D
FQC1510L	37	10	20
FQC1510S	30	10	20



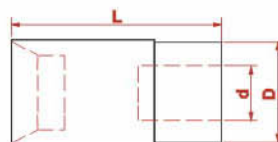
MODEL	L	d	D
FQC1510T	34.5	10	19



MODEL	L	d	D
FQC0810	43	10	20

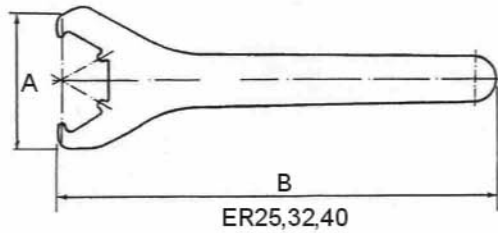
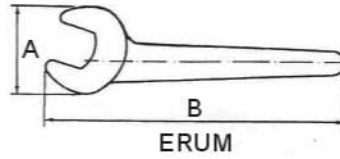
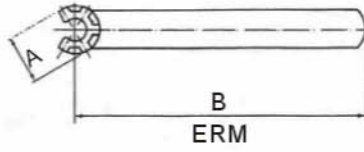


MODEL	L	d	D
FQC1210	42	10	18



MODEL	L	d	D
FQC1410	40	10	20

ER WRENCHS SYSTEM



TOOL NO.	TYPE	A	B
WSER11M	ER11M	17	95
WSER16M	ER16M	22.5	118
WSER16UM	ER16UM	44	140
WSER20M	ER20M	28	130
WSER20UM	ER20UM	53	170
WSER25	ER25	65	210
WSER32	ER32	75	250
WSER40	ER40	90	290



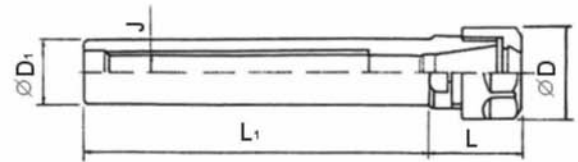
**CNC Cutter Head Fixed Ring
A**



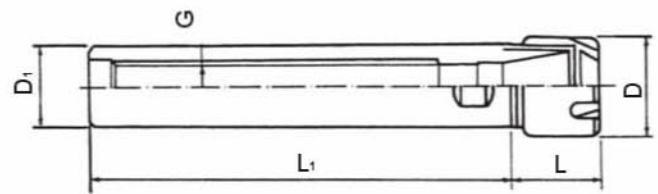
**CNC Cutter Head Fixed Ring
B**



C16 ER11M-100M



C16 ER16-100MM



TOOL NO.	COLLET TYPE	SHANK D _i XL ₁	L	D
WLER11M	ER11M	WS16x100L	22	16
WLER16M	ER16M	WS16x100L	32	22
WLER11	ER11	WS16x100L	21	19
WLER16	ER16	WS16x100L	30	28

WW204A+WD213



WW204A+WD315



- Multi spindle adjustable boring heads
- Multi spindle fix boring heads
- Multi-axe fixed boring series
- CNC cutter head series
- Adaptors & quick change chuck
- HSK63F and ISO30 arbors



www.routmac.com