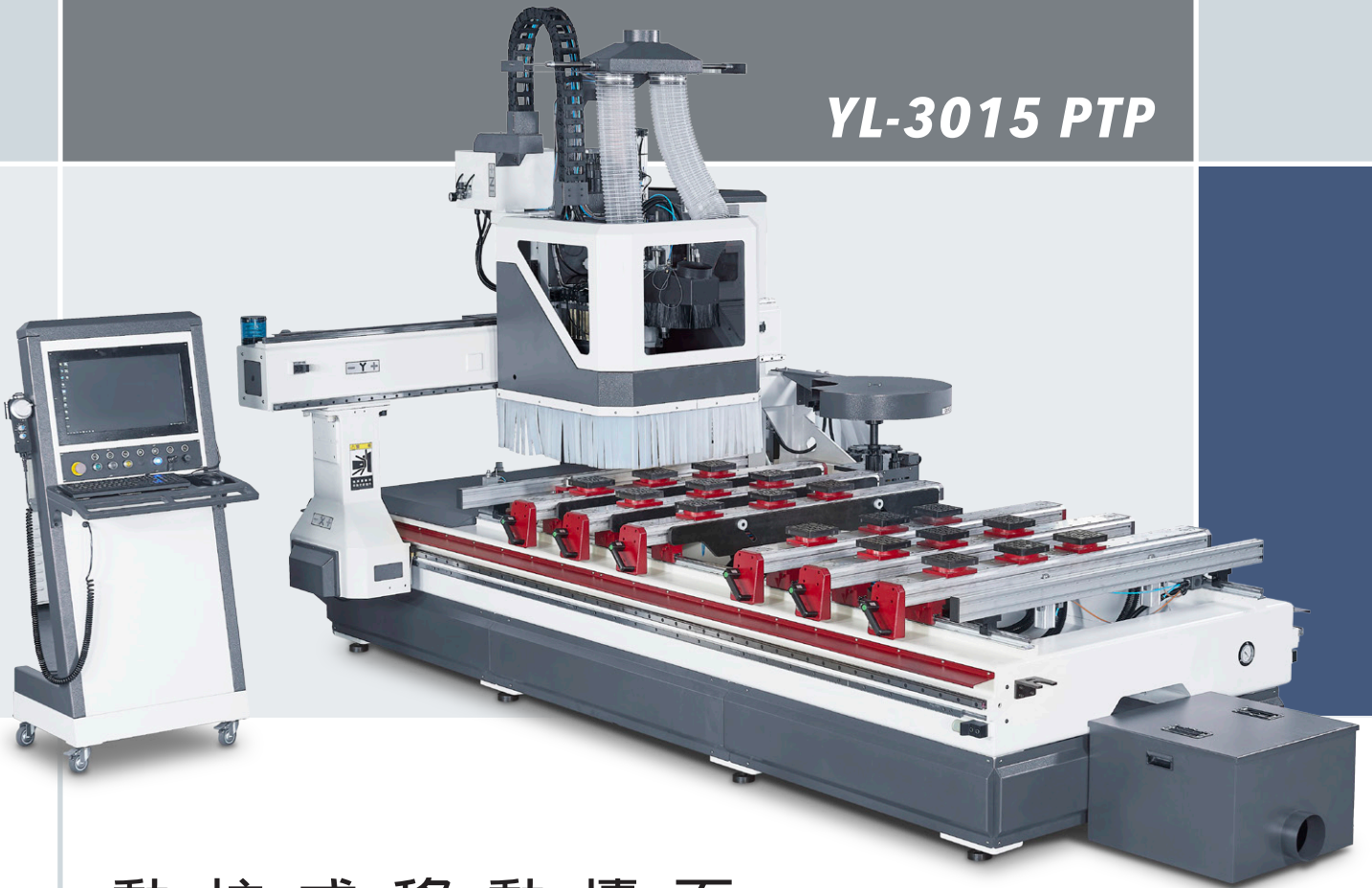


YL-3015 PTP



動柱式移動檯面 MOVING BRIDGE CONSOLE TABLE

產品特性

Product characteristics

- 本機可以不停機換料加工，有左右雙區雙工位及四工位供選擇，其優點為效率高，五面鑽孔，自動排屑
Unfalling work piece processing, two-station working table and four -station working table choose by customer. Five sides diling, Automatic chip removal.
- 精密氣排鑽可輕鬆解決立鑽、側鑽、槽鋸等加工問題。
Precision gas drilling row drilling legislation can be easily resolved, lateral drilling, sawing and other processing problems trough.
- 訂製化廚櫃、衣櫃、酒櫃、視聽櫃等專業數控鑽機械。
Custom of kitchen wardrobe, wine, and other professional audio-visual cabinet CNC drilling machine.



ROUTMAC

動柱式移動檯面 MOVING BRIDGE CONSOLE TABLE

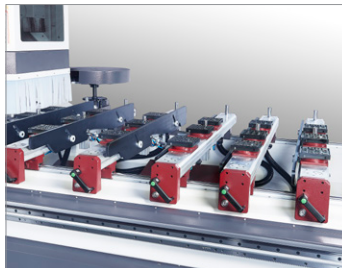


木屑輸送皮帶機

機台配置木屑粉塵輸送機，可將加工後殘餘料自動排出。

Sawdust belt

conveyor Machine Configuration wood dust conveyor, the residual material can be processed automatically discharged .



PTP 真空吸附台面

六組移動式真空吸附台面，左右區四工位的加工設計。

PTP vacuum table

Six group of mobile vacuum adsorption table. Four - station working table designed.



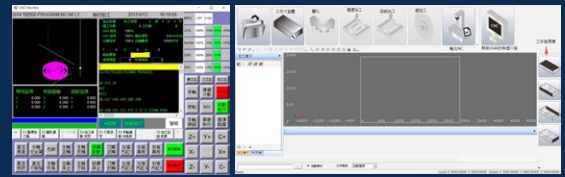
離心式真空泵

4.8kw-140m³/h 排氣量的離心式真空泵，並配置可透視過濾器及 真空破壞功能。

Centrifugal pumps

4.8kw-140m³/h centrifugal pumps, Matched perspective filter and vacuum breaking function.

PC Based CNC 控制介面



採用 SYNTEC 新代控制系統，友善簡易操作介面 多功能人機模組化圖示加工參數。

Equipped with a SYNTEC control system with user-friendly and easy to operate interface. Multi-function modular graphic machining parameters.

主要功能 MAJOR FUNCTIONS :

- 工作六面體選擇介面 Hexahedron selection interface
- 鑽孔加工介面 Drilling interface.
- 循邊加工介面 Edge machining interface.
- 袋銑加工介面 Pocket milling interface
- 鋸切加工介面 Sawing interface

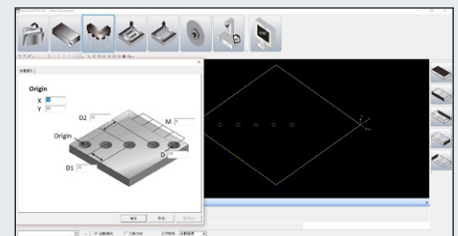
Windows 作業系統功能 FUNCTIONS OF WINDOWS OPERATION SYSTEM:

- 開放式人機介面。Open type human-machine interfacing
- USB 傳輸介面，可經由網路傳送資料。USB transfer interface provides data transfer through internet.
- 提供中 / 英文顯示 Chinese/English display.
- 高速、高精度。High speed, high accuracy.
- 自動加工模式啟動及停止控制。單節程式執行。Automatic machining mode start and stop control. Single block execution.

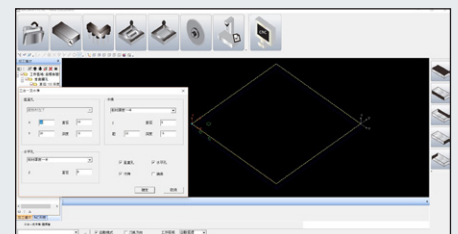
機械規格 Specifications

YL-3015 PTP

真空吸附台 Vacuum table	吸附台 Table size: 1500mm x 6pcs
	真空吸盤 Pods: 135x135x50mm x 24pcs
	前定位氣缸 Front stops : 6pcs
	中間定位氣缸 Intermedia stops: 6pcs
	移動式定位氣缸 Positioning air cylinder: 4pcs
位移速度 Rapid speed	支撐板上下機構 Panel lifting blades: 6pcs
	加工範圍 Working area: 3000x1500mm
	xaxg 軸 -3570mm. Y 軸 -1800mm. Z 軸 -370mm
動力 Main power	工件高度 Working height: 200mm
	主軸功率 Spindle power : 9.6KW ISO30
	真空泵 Vacuum pump: 4.8kw-140m ³ /h
位移速度 Rapid speed	氣排鑽 Pneumatic line boring head: 9V4H2S 2.5HP
	X&Y 軸 -80M/min
機械尺寸 Dimensions	Z 軸 -20M/min
	面積 Area : 5300x5250x2500mm
	淨重 Net weight: 4500kg



• 多孔排鑽加工 MULTIPLE HOLES LINE BORING



• 三合一加工 (KD 孔加工) THREE IN ONE MACHINING (KD HOLE MACHINING)



元隆精密機械廠 / 蒼隆工業有限公司
YUAN LUNG MACHINERY WORKS.
ROUTMAC INDUSTRY CO., LTD.

台灣台中市神岡區豐洲路 1166 號
No.1166, FENG JOU ROAD, SHEN KANG DIST.,
TAICHUNG CITY, TAIWAN.

TEL: +886-4-2562 8397

FAX: +886-4-2562 8398

E-mail:ylwm@ms37.hinet.net

http://www.yuanlung.com.tw

https://www.routmac.com