

PLANER

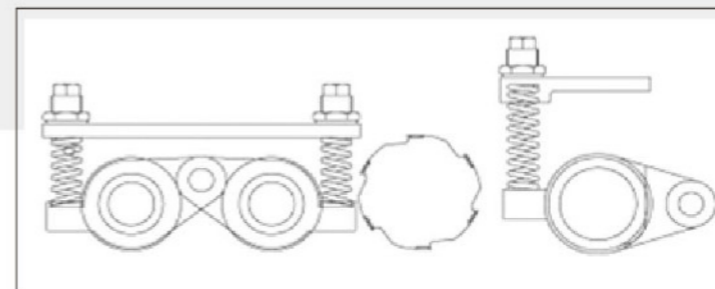
YL-932

YL-940

YL-952

FEATURES:

- Equipped with a digital position controller for accurate and convenient thickness adjustment.
- Straight cutterhead is standard. Helical cutterhead and quick change cutterhead are optional.
- Single infeed roller, twin outfeed rollers combined with twin table rollers exhibit powerful and stable feeding effect.
- Steel infeed and rubber outfeed rollers are standard. Rubber infeed and rubber outfeed rollers are optional.
- Variable feed speed is controlled by a frequency inverter.
- Powered table elevation provides effortless and fast thickness adjustment.
- The table is supported by 4 oversized columns thereby featuring maximum rigidity and stability.
- The table elevation is transmitted by 4 precision ball screws for accurate positioning and smooth movement (Model YL-940 and YL-952 only)
- The massive cast iron table is precision ground.
- Automatic power-off function is activated when the top cover is opened.
- Anti-kickback fingers for operators' safety.



Special Lever Type Pressure Mechanism

Eliminating the conventional sliding block pressure device, the planer is designed with a new lever type pressure mechanism to increase pressure stability.



Digital Position Controller

Thickness of cut can be set by the digital position controller thereby providing high accuracy thickness control.



Hand Chrome Plated Table (Model YL-940 and YL-952 only)

The table surface is hard chrome plated for maximum wear resistance and upgrading workpiece feeding effect.



Precision Ball Screws (Model YL-940 and YL-952 only)

The table elevation is transmitted through 4 oversized ball screws providing high positioning accuracy and extra smooth elevation motion.



Easy Adjustment of Table Rollers

The table rollers are easily adjusted by simply shifting a front-mounted adjustment lever. Both table rollers are adjusted in sync for convenience.



SPECIFICATIONS

MODEL	YL-932	YL-940	YL-952	
Table area	813 x 1000 mm	1016 x 1100 mm	1320 x 1100 mm	
Max. planing width	813 mm	1016 mm	1320 mm	
Max. planing thickness	300 mm	300 mm	300 mm	
Min. planing thickness	3 mm	3 mm	3 mm	
Max. cutting depth	9 mm	9 mm	9 mm	
Knives	Straight cutterhead	4	4	
	Helical cutterhead	6 Slots / 206 pcs	6 Slots / 258 pcs	6 Slots / 336 pcs
Knife sizes	Straight cutterhead	813 x 38 x 6 mm	1016 x 38 x 6 mm	1320 x 38 x 6 mm
	Helical cutterhead	14x14x2.0mm (15x15x2.5mm) (15x15x2.5mm R150)		
cutterhead speed		5000 rpm		
Cutting diameter		125 mm		
Cutterhead motor	15 HP	20 HP	25 HP	
Elevation motor	1/4 HP	1/2 HP	1/2 HP	
Feed speed	5-18 m/min	5-18 m/min	5-18 m/min	
Feed motor	1 HP	2 HP	2 HP	
Net weight	1100 kgs	1250 kgs	1800 kgs	
Gross weight	1250 kgs	1450 kgs	2000 kgs	
Machine size (W x D x H)	138 x 102 x 125 cm	153 x 118 x 125 cm	183 x 118 x 125 cm	
Packing size (W x D x H)	150 x 123 x 150 cm	180 x 136 x 150 cm	210 x 136 x 150 cm	

• All specifications and design characteristics shown in this catalogue are subject to change without notice.

Giving You a Competitive Edge in Quality and Price.

PLANER

YL-926



FEATURES:

- Equipped with digital position controller.
- Straight cutterhead is standard.
- Helical cutterhead and quick change cutterhead are optional.
- Variable feed speed through variable pulley is standard.
- Single infeed roller, twin outfeed rollers combined with twin table rollers exhibit powerful and stable feeding effect.
- Variable feed speed controlled by a frequency inverter is optional.
- Powered table elevation.
- The table is supported by 4 oversized columns.
- Automatic power off when the top cover is opened.



- Pressure mechanism is easy to adjust.
- Equipped with anti-kickback fingers for safety.



- Steel infeed and rubber outfeed rollers are standard.
- Rubber infeed and rubber outfeed rollers are optional.



4-Column Table Support

The table is firmly supported by 4 oversized columns, assuring maximum rigidity and stability during heavy planing.



Frequency Inverter (Optional)

Upon request, the feed speed can be controlled by a frequency inverter (5-18 m/min). It provides variable speed changes for cutting various hard and soft wood materials.



TMA Series (Optional)

- H.S.S. Tersa knives.
- 4 slots.
- Tersa system.



HMR Series (Optional)

- Helical cutterhead.
- Curved-edge inserts. (15x15x2.5mm R150)
- 6 slots standard design.



HMS Series (Optional)

- Helical cutterhead.
- Square-edge inserts. (14x14x2.0mm, 15x15x2.5mm)
- 6 slots standard design.

SPECIFICATIONS

MODEL	YL-926	
Table area	660 x 920 mm	
Max. planing width	660 mm	
Max. planing thickness	300 mm	
Min. planing thickness	3 mm	
Max. cutting depth	9 mm	
Knives	Straight cutterhead	4
	Helical cutterhead	6 Slots / 168 pcs
Knife sizes	Straight cutterhead	660 x 30 x 3 mm
	Helical cutterhead	14x14x2.0mm (15x15x2.5mm) (15x15x2.5mm R150)
cutterhead speed	5000 rpm	
Cutting diameter	125 mm	
Cutterhead motor	10 HP	
Elevation motor	1/4 HP	
Feed speed	5-18 m/min	
Feed motor	1 HP	
Net weight	900 kgs	
Gross weight	1000 kgs	
Machine size (W x D x H)	115 x 92 x 125 cm	
Packing size (W x D x H)	130 x 102 x 150 cm	

• All specifications and design characteristics shown in this catalogue are subject to change without notice.

www.routmac.com

With Planing and Profiling the Entire Width

PLANER

YL-926P



TMD Series Planing / Multi-Profiling Cutterhead Versatile and Efficient Cutting

To planing and profiling (grooved, terrace decking,...) quickly and easily in just one production step.

- Profiling width (Max.) 660 mm
- Profiling depth (Max.) 15 mm
- 4 Slots Tersa knives
- 2 Slots Dovetail profiling knives
- 2 Slots Sodil profiling knives



AUTOMATIC PLANER

YL-20

YL-24



FEATURES:

- The cast iron table is precision ground.
- Table is equipped with two rollers for increasing feed smoothness.
- Straight cutterhead is standard. Helical cutterhead and quick change cutterhead are optional.
- Equipped with magnetic switch.

YL-20B

YL-24B

FEATURES:

- Adjustment of table rollers.
- Variable feed speed through variable pulley. (Optional)



SPECIFICATIONS

MODEL	YL-20	YL-24
Table area	546 x 699 mm	648 x 760 mm
Max. planing width	508 mm	610 mm
Max. planing thickness	178 mm	178 mm
Min. planing thickness	3 mm	3 mm
Max. cutting depth	6.4 mm	6.4 mm
Knives	Straight cutterhead	3
	Helical cutterhead	6 Slots / 132 pcs
Knife sizes	Straight cutterhead	510 x 30 x 3 mm
	Helical cutterhead	14 x 14 x 2.0 mm
Cutterhead speed	5200 rpm	5200 rpm
Cutting diameter	77 mm	77 mm
Feed speed	8 m/min	8 m/min
Cuttinghead motor	3 HP / 5 HP	5 HP / 7.5 HP
Net weight	330 kgs	420 kgs
Gross weight	400 kgs	500 kgs
Machine size (W x D x H)	82 x 70 x 97 cm	92 x 77 x 97 cm
Packing size (W x D x H)	93 x 79 x 117 cm	109 x 97 x 117 cm

• All specifications and design characteristics shown in this catalogue are subject to change without notice.

YL-20H

YL-24H



FEATURES:

- Enclosed machine structure. This series of planers is heavier than YL-20 and YL-24 and more ideal for heavy duty planning.
- Straight cutterhead is standard. Helical cutterhead and quick change cutterhead are optional.
- Massive cast iron table is precision ground.
- The table is equipped with two rollers for increasing feed smoothness.

YL-20HD

YL-24HD

Digital Position Control Type



SPECIFICATIONS

MODEL	YL-20H	YL-24H
Table area	546 x 724 mm	635 x 775 mm
Max. planing width	508 mm	610 mm
Max. planing thickness	178 mm	178 mm
Min. planing thickness	3 mm	3 mm
Max. cutting depth	6.4 mm	6.4 mm
Knives	Straight cutterhead	3
	Helical cutterhead	6 Slots / 132 pcs
Knife sizes	Straight cutterhead	510 x 30 x 3 mm
	Helical cutterhead	14 x 14 x 2.0 mm
Cutterhead speed	5200 rpm	5200 rpm
Cutting diameter	77 mm	77 mm
Feed speed	8 m/min	8 m/min
Cuttinghead motor	5 HP	5 HP / 7.5 HP
Net weight	360 kgs	550 kgs
Gross weight	430 kgs	630 kgs
Machine size (W x D x H)	86 x 72 x 111 cm	95 x 78 x 111 cm
Packing size (W x D x H)	93 x 86 x 135 cm	107 x 86 x 135 cm

• All specifications and design characteristics shown in this catalogue are subject to change without notice.

Ruggedly Constructed Throughout ! High Precision Cutting!

JOINTER

YL-912J

YL-914J

YL-916J

YL-920J

FEATURES:

- Straight cutterhead is standard. Helical cutterhead and quick change cutterhead are optional.
- Heavy gauge steel metal base assures maximum rigidity and stability.
- Cast iron fence tilts 45°~90°.
- Easily accessed control box.
- Specially designed cutterhead guard for safety.
- Fast infeed and outfeed tables adjustment by quick levers.
- Infeed and outfeed tables are precision ground.



CE

SPECIFICATIONS

MODEL	YL-912J	YL-914J	YL-916J	YL-920J	
Table area	305 x 2020 mm	355 x 2020 mm	406 x 2300 mm	540 x 2300 mm	
Spindle speed	5300 rpm	5300 rpm	5300 rpm	5300 rpm	
Cutting diameter	100 mm	100 mm	100 mm	100 mm	
Cutterhead motor	3 HP	3 HP	5 HP	5 HP	
Knives	Straight cutterhead	3	4	4	
	Helical cutterhead	6 Slots / 78 pcs	6 Slots / 90 pcs	6 Slots / 102 pcs	6 Slots / 132 pcs
Knife sizes	Straight cutterhead	305 x 30 x 3 mm	355 x 30 x 3 mm	406 x 30 x 3 mm	510 x 30 x 3 mm
	Helical cutterhead	14 x 14 x 2.0 x 30° mm	14 x 14 x 2.0 x 30° mm	14 x 14 x 2.0 x 30° mm	14 x 14 x 2.0 x 30° mm
Feed size	1100 x 150 mm	1100 x 150 mm	1100 x 150 mm	1100 x 150 mm	
Fence tilting	90° ~ 45°	90° ~ 45°	90° ~ 45°	90° ~ 45°	
Net weight	380 kgs	420 kgs	450 kgs	560 kgs	
Gross weight	460 kgs	500 kgs	540 kgs	660 kgs	
Machine size (W x D x H)	202 x 58 x 95 cm	202 x 63 x 95 cm	230 x 68 x 95 cm	240 x 78 x 95 cm	
Packing size (W x D x H)	210 x 58 x 115 cm	210 x 63 x 115 cm	238 x 68 x 115 cm	248 x 81 x 115 cm	

• All specifications and design characteristics shown in this catalogue are subject to change without notice.

YL-612

FEATURES:

- Straight cutterhead is standard. Helical cutterhead and quick change cutterhead are optional.
- Heavy gauge steel metal base assures maximum rigidity and stability.
- Specially designed cutterhead guard for safety.
- Cutterhead features sound reduction design.



SPECIFICATIONS

MODEL	YL-612	
Table area	305 x 1840 mm	
Spindle speed	5300 rpm	
Cutting diameter	100 mm	
Cutterhead motor	2 HP (3HP)	
Knives	Straight cutterhead	3
	Helical cutterhead	6 Slots / 78 pcs
Knife sizes	Straight cutterhead	305 x 30 x 3 mm
	Helical cutterhead	14 x 14 x 2.0 mm
Feed size	110 x 990 mm	
Net weight	330 kgs	
Gross weight	400 kgs	
Machine size (W x D x H)	184 x 60 x 95 cm	
Packing size (W x D x H)	188 x 95 x 105 cm	

• All specifications and design characteristics shown in this catalogue are subject to change without notice.